

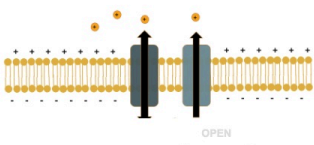
Interrogating the role of hydrogel electrical and physical properties on neural cell behavior

Nicole K. Wegrzyniak¹, Alena Casella², J. Kent Leach^{2,3}

¹School of Veterinary Medicine, University of California, Davis, Davis, California, ²Department of Biomedical Engineering, University of California, Davis, Davis, California, ³Department of Orthopaedic Surgery, UC Davis Health, Sacramento, California.

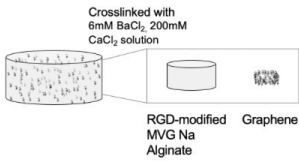


Introduction



Methods

Experimental Design:



Mechanical Characterization

OPEN

Results

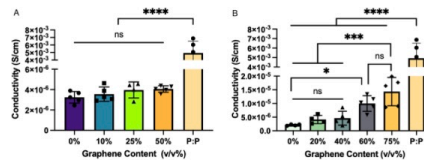


Figure 1. Electrical characterization of graphene, RGD-modified Na alginate hydrogels. Conductivity of hydrogels containing increasing graphene concentrations of 0 to 60 v/v% graphene (A) and 0 to 75 v/v% graphene (B). P-P: pure PEDOT:PSS, is the positive control. Data are mean ± SD, n=4-5.

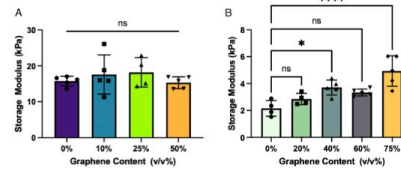
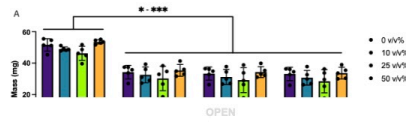


Figure 2. Mechanical characterization of graphene, RGD-modified Na alginate hydrogels. Storage modulus of hydrogels containing increasing graphene concentrations of 0 to 60 v/v% graphene (A) and 0 to 75 v/v% graphene (B). Data are mean ± SD, n=4-5.



Conclusion

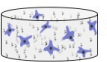
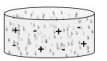
- The maximum concentration of graphene for gelation is 75 v/v%.
- An increase in graphene concentration can lead to an increase in conductivity.
- Storage modulus remains similar for most graphene concentration groups.
- Degradation rate of graphene alginate hydrogels declines from day 5

OPEN

Future work

The effect of hydrogel conductivity on:

- Hydrogel surface charge.
- PC12 cell adhesion.
- Cell viability and metabolic activity.
- Neurite extension and neuronal gene expression.



REFERENCES

CONTACT AUTHOR

GET IPOSTER

Interrogating the role of hydrogel electrical and physical properties on neural cell behavior

Interrogating the role of hydrogel electrical and physical properties on neural cell behavior
 Nicole K. Wegrzyniak¹, Alena Casella², J. Kent Leach³
¹School of Veterinary Medicine, University of California, Davis, Davis, California, ²Department of Biomedical Engineering, University of California, Davis, Davis, California, ³Department of Orthopaedic Surgery, UC Davis Health, Sacramento, California.

Introduction

Methods
 Experimental Design:
 Combined with 1000 mg/L, 2000 mg/L CaCl₂ solution

Results

Conclusion

- The maximum concentration of graphene for gelation is 75 μg/mL.
- An increase in graphene concentration can lead to an increase in conductivity.
- Storage modulus remains similar for most graphene concentration groups.

Future work

The effect of hydrogel conductivity on:

- Hydrogel surface charge.
- PC12 cell adhesion.
- Cell viability and metabolic activity.
- Neurite extension and neuronal gene expression.

[CONTACT AUTHOR](#) [GET POSTER](#)

Nicole K. Wegrzyniak¹, Alena Casella², J. Kent Leach^{2 3}

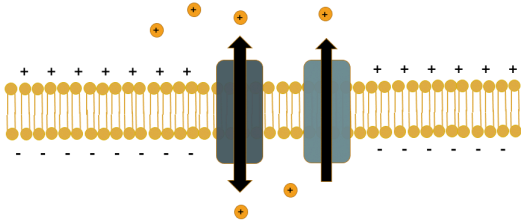
¹School of Veterinary Medicine, University of California, Davis, Davis, California, ²Department of Biomedical Engineering, University of California, Davis, Davis, California, ³Department of Orthopaedic Surgery, UC Davis Health, Sacramento, California.



PRESENTED AT:



INTRODUCTION



- Nearly every tissue in the body is innervated and influenced by cellular bioelectricity, which is crucial for proper tissue behavior, homeostasis, and healing, yet this aspect has received limited attention in tissue engineering.
- Conductive biomaterials direct electroactive cell behavior and differentiation.
- Graphene is an electron conductor commonly used in tissue engineering to support nerve activity while alginate is commonly used as a cell transplantation vehicle due to its tunability and biocompatibility.
- The interplay between material electrical and physical properties is poorly understood and is critical for improving biomaterial design for clinical translation.

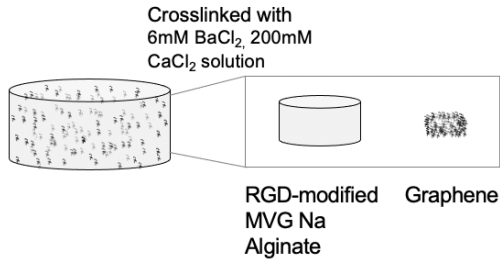


Hypothesis:

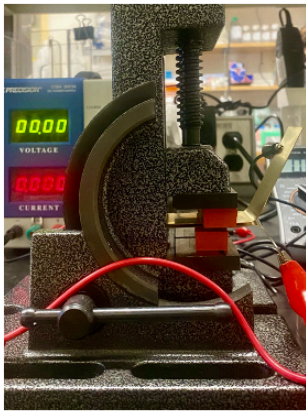
The interplay of hydrogel electrical and physical properties, including conductivity, storage modulus, and degradation, influences cell adhesion and viability and promotes neural cell morphology and behavior.

METHODS

Experimental Design:



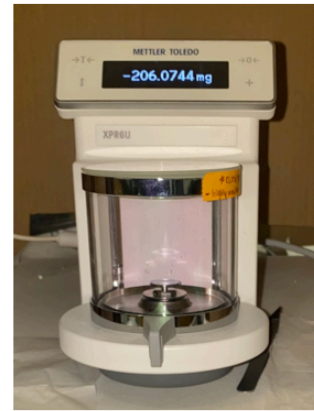
Mechanical Characterization



Conductivity

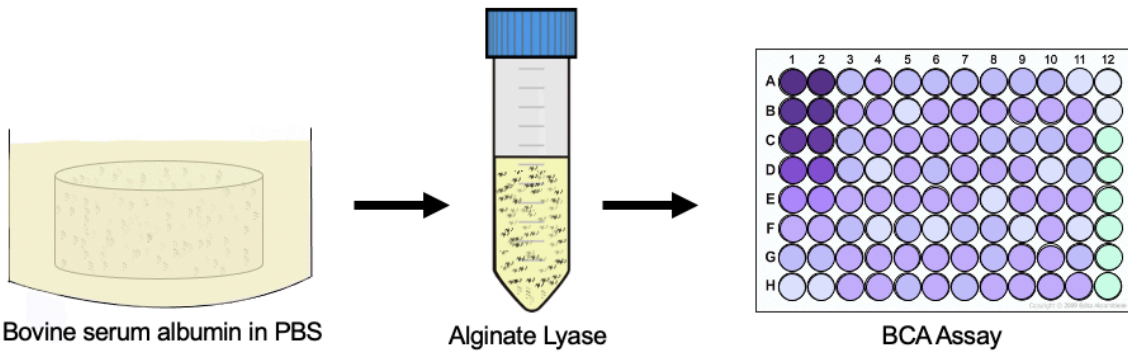


Storage Modulus



Degradation

Protein Adsorption



RESULTS

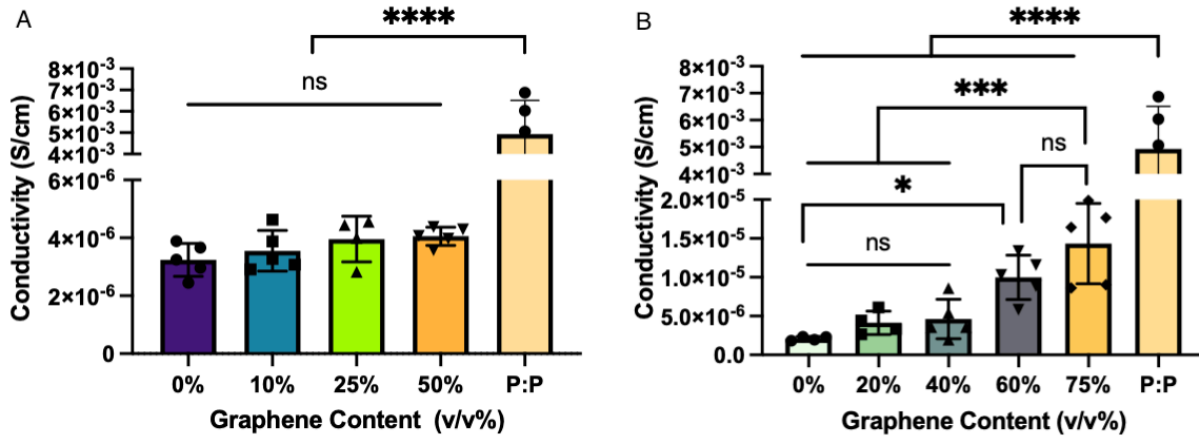


Figure 1. Electrical characterization of graphene, RGD-modified Na alginate hydrogels. Conductivity of hydrogels containing increasing graphene concentrations of 0 to 60 v/v% graphene (A) and 0 to 75 v/v% graphene (B). P:P, pure PEDOT:PSS, is the positive control. Data are mean ± SD; n=4-5.

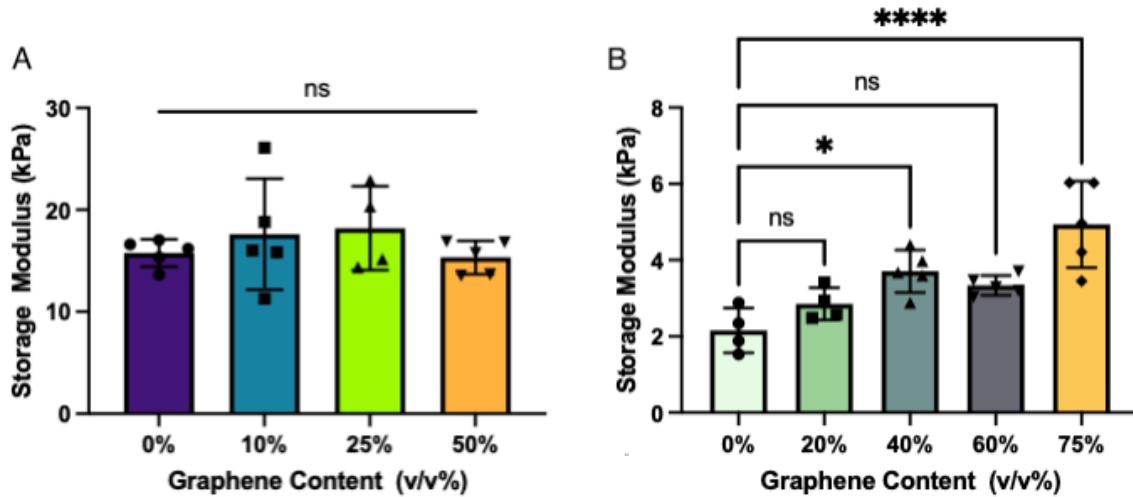


Figure 2. Mechanical characterization of graphene, RGD-modified Na alginate hydrogels. Storage modulus of hydrogels containing increasing graphene concentrations of 0 to 60 v/v% graphene (A) and 0 to 75 v/v% graphene (B). Data are mean ± SD; n=4-5.

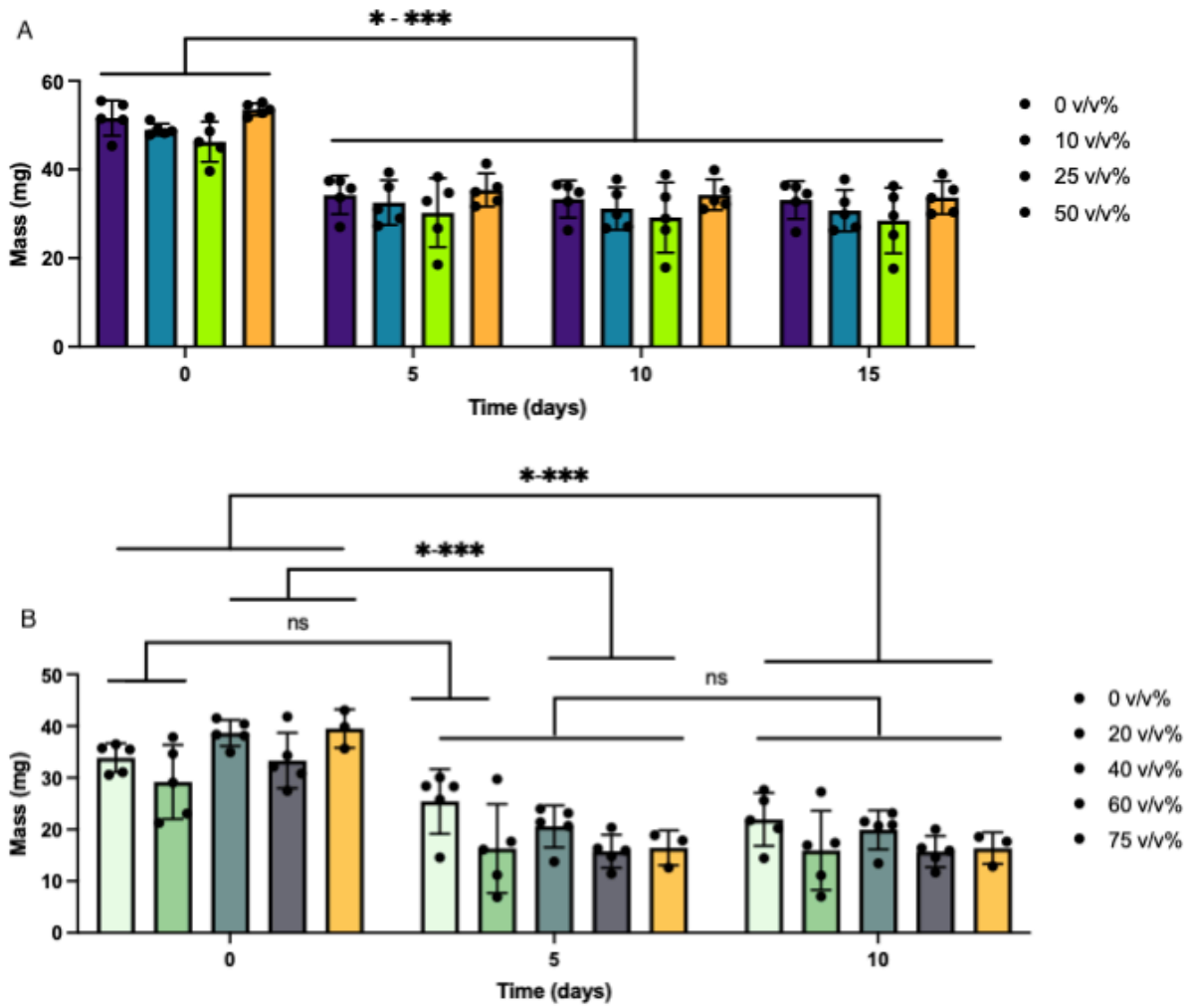


Figure 3. Degradation properties of graphene, RGD-modified Na alginate hydrogels. Degradation of hydrogels containing increasing graphene concentrations of 0 to 60 v/v% graphene over 15 days (A) and 0 to 75 v/v% graphene over 10 days (B). Data are mean \pm SD; n=4-5.

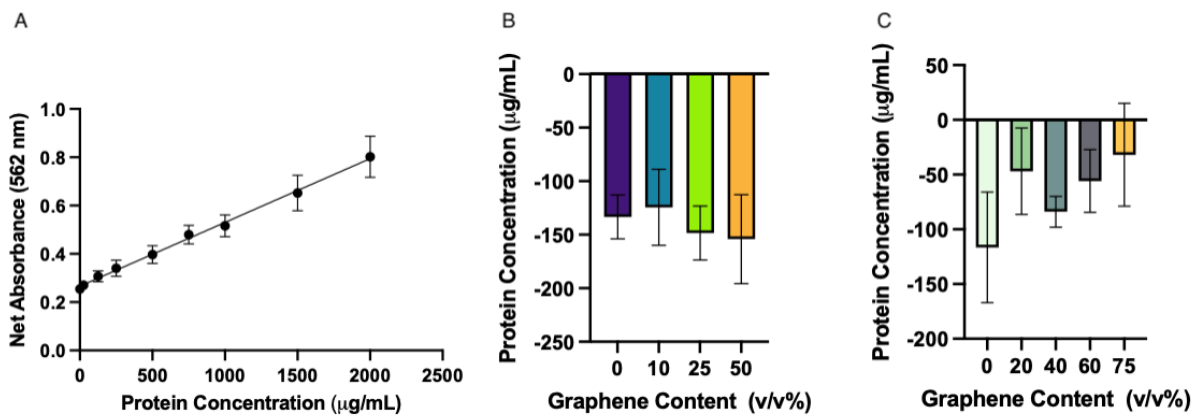


Figure 4. Graphene alginate hydrogel protein adsorption. (A) BCA Protein Assay standard curve read at 562 nm. (B) Protein concentration adsorbed into 0 to 60 v/v% graphene alginate hydrogels. (C) Protein concentration adsorbed into 0 to 75 v/v% graphene alginate hydrogels. Data are mean \pm SD; n=5-6.

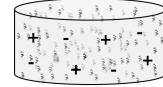
CONCLUSION

- The maximum concentration of graphene for gelation is 75 v/v%.
- An increase in graphene concentration can lead to an increase in conductivity.
- Storage modulus remains similar for most graphene concentration groups.
- Degradation rate of graphene alginate hydrogels declines from day 5 to day 15.
- These results can better serve future studies that aim to explain advantages of conductive materials for biological applications.

FUTURE WORK

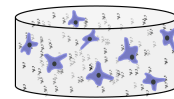
The effect of hydrogel conductivity on:

- Hydrogel surface charge.

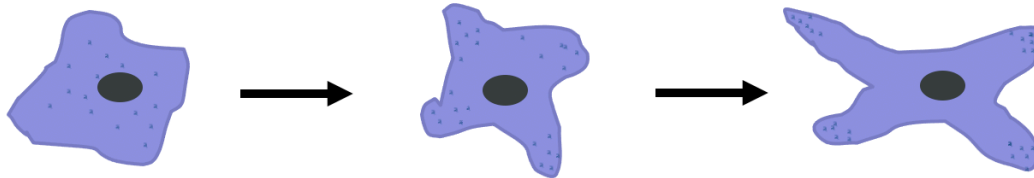


- PC12 cell adhesion.

- Cell viability and metabolic activity.



- Neurite extension and neuronal gene expression.



REFERENCES

Burnstine-Townley A, Eshel Y, Amdursky N. Conductive scaffolds for cardiac and neuronal tissue engineering: governing factors and mechanisms. *Advanced Functional Materials* 2019;1901369.

Das S, Gordian-Velez WJ, Ledebur HC et al. Innervation: the missing link for biofabricated tissues and organs. *NPJ Regen Med* 2020;5:11.